

## CSP - Your security to the next level

### What is Perimeter Security and what are the advantages?

It refers to protecting the boundaries of a property. This type of security is clearly important, because the majority of threats to a business start from the outside. If you can protect the boundaries of your business and investigate suspicious behavior that occurs there before it becomes more serious, you'll have a much more secure organization.

### The Challenges of Perimeter Security

To understand the best ways to improve perimeter security, it's first important to know what challenges exist. This can help you pinpoint what you need to overcome.

The first challenge is that the perimeter of most locations is quite large. This is especially true if you are talking about a truck yard, automotive lot, warehouse, factory, or other similar property. These properties have very large areas and that means there's a lot to protect.

Trying to maintain effective perimeter protection system using traditional onsite guards, for instance, can be very difficult at a large location. There's only so much that a security guard can see and only so much ground that they can cover. At any given time, there will likely be areas that are unprotected since guards cannot be in all locations at once.

In addition, there is a limit to what guards can see. If there are unlit areas, or areas that lack effective lighting, criminals can use these to hide. The same is true for trees, bushes, and other potential obstructions. If a criminal can avoid being spotted in one of these areas, they could have enough time to work on breaking through your fence, for example.

Or they could hide out and attack someone who isn't able to see them. In addition, many criminals strike at night, working under the cover of darkness. Onsite security guards may not notice them.

Another potential challenge is that most large properties have several entry points. There could be a main entrance, side entrances, loading docks, parking garages, pedestrian entrances, and much more.

There could also be other areas that criminals may use as entry points, such as small walls or bushes that could be climbed over, or other landscaped areas where access may be possible. With all of these potential entry points, there is a lot to protect, secure, and watch over.

#### Problem:

- ❖ Threats to critical infrastructure
- ❖ Slow response time to potential threats
- ❖ Exposure to water-borne threats

#### Solution:

- ❖ Detects & classifies intrusion activity
- ❖ Integrates with camera systems
- ❖ Delivers real-time redundancy

#### Value Delivered:

- ❖ Fast, reliable detection system
- ❖ Wholistic security system
- ❖ Decreased alarm fatigue

## Perimeter protection solutions for high security requirements

Protection of your boundaries is the first layer in a strong security posture. To be alerted quickly when an intrusion occurs is vital to ensuring intruders remain as far away from your property as possible. We can deliver strong, reliable, perimeter protection solutions using hardware and software solutions.

### Perimeter Defender

#### Reduce false alarms

For when you need a reliable and accurate intrusion detection system with low numbers of false alarms.

Axis Perimeter Defender can run on optical or thermal cameras and can accurately detect both humans and vehicles within the safe zones that you set.

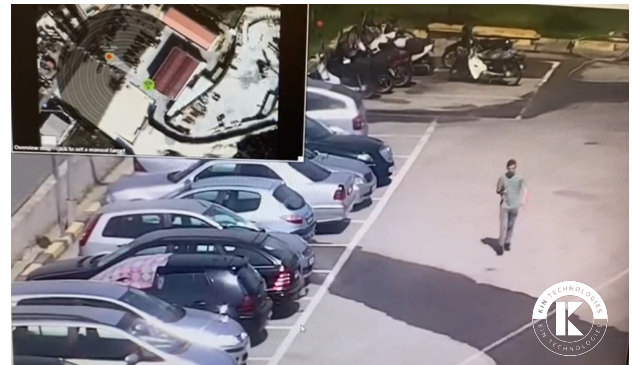


### Radar-based detection and tracking

#### Real-time security

Radar can augment your security when real-time detection is needed and is particularly useful for generating alarms to be acted upon by operators.

Couple radar with tracking PTZ cameras and you have a very powerful surveillance tool which works in all weather conditions, day or night.



### Thermal cameras

#### Real-time security

Thermal cameras supercharge your detection capability. Whilst not used directly for evidential purposes, the high contrast of warm objects against a cold background allows for hugely improved detection capabilities and lower false negatives.



## CSP – your ideal perimeter detection partner

CSP has over 15 years of experience in designing security CCTV systems.

Our extensive knowledge of CCTV cameras, camera placement, lighting conditions, suppliers, software and video management systems, combined with our long-lasting relationships with the top suppliers on the market, makes us an ideal partner when choosing your new perimeter detection system – or updating your existing one.

We can help you find your perfect perimeter detection system! Contact one of our surveillance experts to review your options.

